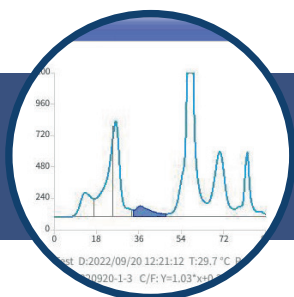




# VERCENTRA

## HB-20

*Modern and fully automated analyzer for measuring HbA1c by HPLC, promotes greater agility and safety for laboratory routines.*



**Productivity and efficiency.** Up to 30 tests per hour, a method traceable to IFCC/NGSP, with continuous control of liquid speed to ensure high accuracy in results, good repeatability and ease of operation. An ideal model to meet your laboratory needs.



**High performance and compact.** Capacity for up to 18 on-board samples with barcode reading. New samples can be added after the pipetting step. The software is user-friendly, with a simple and easy-to-use interface.



**Safety and autonomy.** Allows conveying charts by means of LIS system, with integrated thermal printer and the option to connect an external barcode reader, which simplifies processing and improves traceability of patient data.

# VERCENTRA

## HB-20

## Model Specifications

Rated Speed	30 tests/hour (< 120 S/Test)
Reagents	<ul style="list-style-type: none"> <li>• Reagent set available for 800, 1600 or 2400 tests</li> <li>• Automated detection of on-board reagent inventory</li> </ul>
Samples	<ul style="list-style-type: none"> <li>• Barcode reader (optional)</li> <li>• Whole blood</li> <li>• 18 positions</li> <li>• Aspiration volume: 4 µL</li> <li>• Automated dilution of whole blood samples</li> </ul>
Methodology	HPLC (High Performance Liquid Chromatography)
Measurement Range (NGSP)	3.0 - 20%
Data Storage	100.000 results with charts
Interface System	<ul style="list-style-type: none"> <li>• RS-232</li> <li>• RJ45</li> </ul>
Work Environment	<ul style="list-style-type: none"> <li>• 10°C - 30°C</li> <li>• Humidity: ≤ 70%</li> <li>• Altitude: Self-adaptative</li> </ul>
Quality Control	<ul style="list-style-type: none"> <li>• 2 levels of control (Qualitrol Vercentra HbA1c)</li> <li>• Possibility of setting intervals and average</li> <li>• Levey-Jennings chart</li> </ul>
Performance Indicators	<ul style="list-style-type: none"> <li>• Precision: ± 5,0%</li> <li>• Repeatability: CV ≤ 2,0%</li> </ul>
Results Output	<ul style="list-style-type: none"> <li>• Internal thermal printer</li> <li>• External printer (optional)</li> <li>• LIS</li> <li>• USB</li> </ul>
Dimensions (HxWxL)	52,1 x 32,5 x 45,7 cm
Weight	22 kg

Read the QR Code  
and access the **digital**  
version. Talk to our  
Comercial team.

