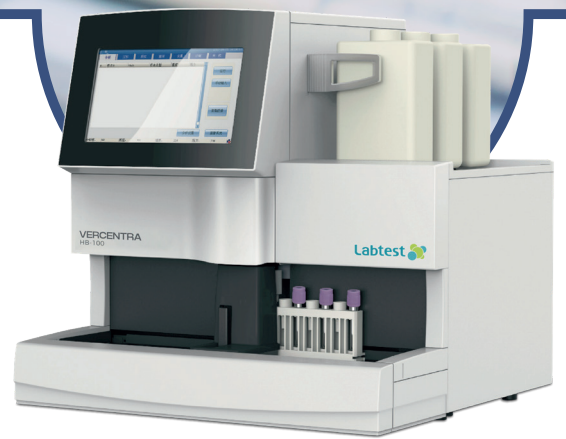


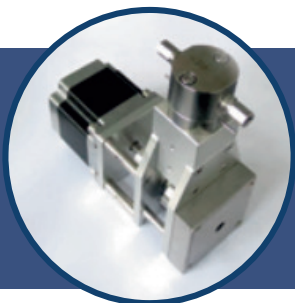


# VERCENTRA HB-100

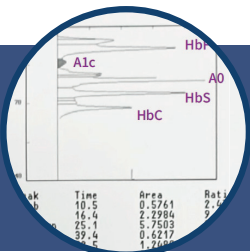
*Glycated Hemoglobin Analyzer using HPLC (High Performance Liquid Chromatography) principle at speed of up to 50 tests/hour.*



**Agility and convenience.** Automated analyzer capable of processing up to 50 tests per hour and accommodating 100 tubes in the automated sample loading module (10 racks). It features a STAT position for the immediate insertion of high-priority samples at any time.



**Quality and high precision.** The analyzer is equipped with a 24-bit detector for increased accuracy, resulting in better resolution and quality results. It comes with freeze-dried calibrators associated with the IFCC-RMP and quality controls at two levels, enabling data evaluation using Levey-Jennings graphs.



**Efficiency and stability.** The capability to differentiate between different types of hemoglobin like HbF and L-A1c enhances the accuracy of glycated hemoglobin tests by minimizing interference and refining measurement precision. Additionally, it offers fast sample analysis and robust anti-interference characteristics.

# VERCENTRA

## HB-100

# Model Specifications

<b>Rated Speed</b>	<ul style="list-style-type: none"> <li>• Normal mode: 50 test/hour (&lt; 72 S/Test)</li> <li>• Varying Mode: 32 tests/hour (&lt; 110 S/Test)</li> </ul>
<b>Reagents</b>	<ul style="list-style-type: none"> <li>• Set of reagents available for 3000 tests or 6000 tests</li> <li>• Automated detection of on-board reagent inventory</li> </ul>
<b>Samples</b>	<ul style="list-style-type: none"> <li>• Barcode reader</li> <li>• Whole blood</li> <li>• 100 positions (10 racks with 10 positions)</li> <li>• Aspiration volume: 3 µL</li> <li>• 1 emergency position</li> <li>• Automated dilution of whole blood samples</li> </ul>
<b>Methodology</b>	HPLC (High Performance Liquid Chromatography)
<b>Measurement Range (NGSP)</b>	4.0 - 17%
<b>Data Storage</b>	100.000 results with chromatogram
<b>Interface System</b>	<ul style="list-style-type: none"> <li>• RS-232</li> <li>• RJ45</li> </ul>
<b>Work Environment</b>	<ul style="list-style-type: none"> <li>• 10°C - 30°C</li> <li>• Humidity: ≤ 70%</li> <li>• Altitude: Self-adaptative</li> </ul>
<b>Quality Control</b>	<ul style="list-style-type: none"> <li>• 2 control levels (Qualitrol Vercentra HbA1c)</li> <li>• Possibility of setting intervals and averages</li> <li>• Levey-Jennings chart</li> </ul>
<b>Performance Indicators</b>	<ul style="list-style-type: none"> <li>• Repeatability: CV ≤ 2,0%</li> <li>• Coefficient of correlation: 0.9900</li> <li>• Carry-over : ≤ 2.0%</li> </ul>
<b>Results Output</b>	<ul style="list-style-type: none"> <li>• Internal thermal printer</li> <li>• External printer (optional)</li> <li>• LIS</li> <li>• USB</li> </ul>
<b>Dimensions (HxWxL)</b>	54 x 54 x 54 cm
<b>Weight</b>	40 kg