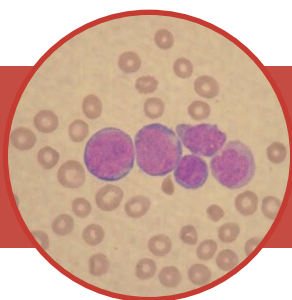




# Aud-H 5AL

*Automatic and quantitative 5-part differential hematological analyzer, which provides 27 parameters.*



**Excellence in precision and automated sampling.** Measurement of white blood cells, providing information about size and complexity of the cells. Featuring an automatic loader of up to 30 tubes for continuous provision.



**High productivity and dynamism.** Low consumption of reagents, speed of up to 60 samples per hour with possibility of insertion of an emergency sample with automatic loading.



**Eased maintenance with complete and intuitive software.** Definition of maintenance automatically programmed by software. Possibility of customized reports. Control monitoring by Levey-Jennings chart, allowing a better follow-up and management of internal quality control.

# Aud-H 5AL

## Model Specifications

May/2023

Nominal speed	<ul style="list-style-type: none"> <li>• 50 samples/hour - closed tube module</li> <li>• 60 samples/hour - Autoloader mode</li> </ul>
Número de parámetros	<ul style="list-style-type: none"> <li>• 27 (WBC, Lym%, Mon%, Neu%, Eos%, Bas%, Lym#, Mon#, Neu#, Eos#, Bas#, RBC, HGB, HCT, MCV, MCH, MCHC, RDW-CV, RDW-SD, PLT, MPV, PDW, PCT, LIC%, LIC#, ALY%, ALY#)</li> <li>• 3 histograms and 1 scatter</li> </ul>
Reagents	It operates with 4 reagents (1 diluent and 3 hemolyzing solutions)
Samples	<ul style="list-style-type: none"> <li>• 20µL pre-diluted module</li> <li>• 20µL whole blood module</li> </ul>
Methodologies	<ul style="list-style-type: none"> <li>• Impedance</li> <li>• Photometry (hemoglobin) free of cyanide</li> <li>• Laser flow cytometry with chemical coloring</li> <li>• Independent channel for basophils count</li> </ul>
Pipetting system	<ul style="list-style-type: none"> <li>• Closed tube pipetting</li> <li>• Autoloader</li> </ul>
Data storage	Up to 40,000 results, including graphical and numerical information
Interface system	LAN Port: supports HL7 protocol
Quality Control	It allows the enrollment of samples and controls, and visualization of statistical and graphical data
Dimensions (HxLxW)	52,5 x 59 x 57 cm
Weight	58 kg

